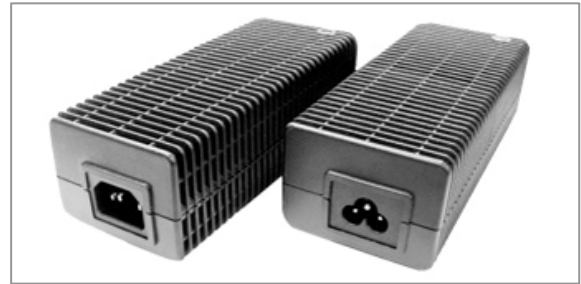


Desktop power supply

Features:

- Active PFC
- Meet ENERGY STAR V
- CE compliance
- Over voltage protective installation
- Short circuit protective installation
- Over current protective installation
- Special thermal solution

**SAFETY AGENCY APPROVALS:**



Specifications:	GPSU120 series:
Input voltage	100~240VAC
Input frequency	50~60Hz (Limits: 47~63Hz)
Input current	2.5A Max.
Safety ground leakage current	3.5mA.@240VAC/50Hz
Output voltage	See rating chart
Output current	See rating chart
Output power range	See rating chart
Ripple	2% peak to peak maximum
Over voltage protection	Yes. Auto-recovery
Over current protection	Yes. Auto-recovery
Short circuit protection	Yes. Auto-recovery
Temperature coefficient	All output±0.04%/°C maximum
Transient response	Maximum excursion of 4% or better on all models. Recovering to 1% of final value within 500uS after a 25% step load change
Operating temperature	0°C ~+40°C. See derating curve
Storage temperature	-40°C ~+85°C
Relative humidity	5% to 95% non-condensing
Derating	Derated from 100% at + 40°C linearly to 70% at 50°C
Efficiency	87% Typical
Setup up / Hold up / Rise time	Typical:1000ms / 10ms / 50ms at full load
Line regulation	±1% maximum for any input voltage change between input voltage range
Load regulation	Typical ±5% variations from minimum to maximum output current.
Insulation resistance	50Mohm minimum from input to output
Inrush current	100AMPS @ 230VAC at 25°C cold start
Withstand voltage	2550VDC from input to output
Mean time between failure	100,000 hours minimum at full load at 25°C ambient
EMI requirements	(A)CE : Emission:EN55022; EN61000-3-2,3/ Immunity; IEC61000-4-2,3,4,5,6,11
Safety requirements	(A)UL60950-1 CSA C22.2 (B)EN60950-1; IEC60950-1
Warranty	1year

UNIT:mm

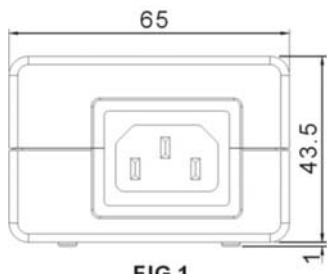


FIG 1

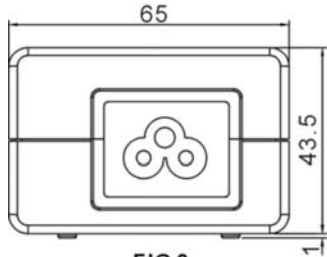
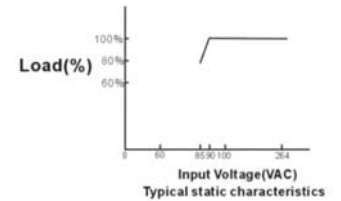
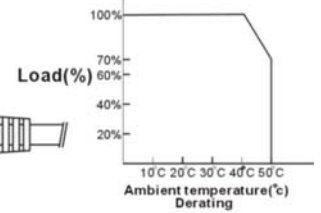
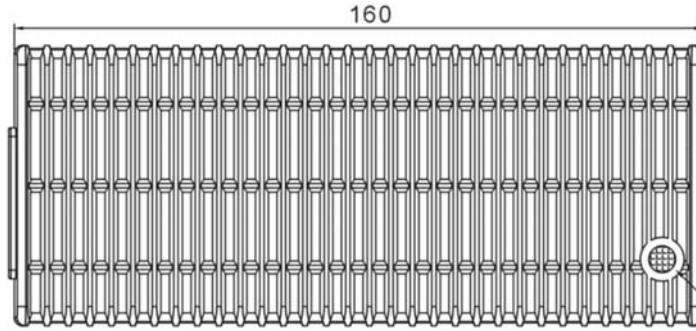


FIG 2



X=A=IEC-320-C14 (FIG1) or C=IEC-320-C6 (FIG2)

Model	Output Voltage(VDC)	Output Current(A)	Max .Output Power (W)	Ripple(mV) Max.	Line Regulation (%)	Load Regulation (%)	Avg. EFF (%) 25,50,75,100% load	No load Power Consumption(W)
GPSU120X-4	12	8.5	102	270	±2	±5	87	<0.5
GPSU120X-4	12.5	8.2	102.5	270	±2	±5	87	<0.5
GPSU120X-4	13	8.2	106.6	270	±2	±5	87	<0.5
GPSU120X-4	13.5	8.6	116.1	270	±2	±5	87	<0.5
GPSU120X-4	14	7.6	106.4	270	±2	±5	87	<0.5
GPSU120X-4	14.5	7.3	105.85	270	±2	±5	87	<0.5
GPSU120X-4	15	7.3	109.5	270	±2	±5	87	<0.5
GPSU120X-4	15.5	6.9	106.95	270	±2	±5	87	<0.5
GPSU120X-4	16	6.9	110.4	270	±2	±5	87	<0.5
GPSU120X-4	16.5	6.5	107.25	270	±2	±5	87	<0.5
GPSU120X-4	17	6.5	110.5	270	±2	±5	87	<0.5

X=A=IEC-320-C14 (FIG1) or C=IEC-320-C6 (FIG2)

Model	Output Voltage(VDC)	Output Current(A)	Max. Output Power (W)	Ripple (mV) Max.	Line Regulation (%)	Load Regulation (%)	Avg. EFF (%) 25,50,75,100% load	No load Power Consumption(W)
GPSU120X-6	18	6.0	108	300	±2	±5	87	<0.5
GPSU120X-6	18.5	6.0	111	300	±2	±5	87	<0.5
GPSU120X-6	19	6.0	114	300	±2	±5	87	<0.5
GPSU120X-6	19.5	5.8	113.1	300	±2	±5	87	<0.5
GPSU120X-6	20	5.8	116	300	±2	±5	87	<0.5
GPSU120X-6	20.5	5.6	114.8	350	±2	±5	87	<0.5
GPSU120X-6	21	5.6	117.6	350	±2	±5	87	<0.5
GPSU120X-6	21.5	5.4	116.1	350	±2	±5	87	<0.5
GPSU120X-6	22	5.4	118.8	350	±2	±5	87	<0.5
GPSU120X-6	22.5	5.2	117	350	±2	±5	87	<0.5
GPSU120X-6	23	5.2	119.6	350	±2	±5	87	<0.5
GPSU120X-6	23.5	5.0	117.5	350	±2	±5	87	<0.5
GPSU120X-6	24	5.0	120	350	±2	±5	87	<0.5

Note:

(1) Weight: Approx 580g

(2) Optional output connectors (see page 75)